



# SG500

## AUTOMATIC SOFTGEL POLISHER



### BENEFITS

- Reduced labor: suitable for both small & large batches
- Rated at up to 500,000 softgels per hour
- Easily fits into any operation, occupies little floor space
- Perfect for both pharmaceutical & nutraceutical operations
- Easy access & cleaning
- For safety, machines will stop if opened during operation
- Allows machine to be used in both automatic & batch processes
- Allows speed to be adjusted to output of softgel machine
- Facilitates visual inspection of the process
- Able to "keep up" with any softgel production machine
- Can be disassembled without tools
- Powerful enough to handle any size softgel
- Machine is quiet when in operation
- Does not require special electrical connection
- Easy portability
- Variable, reproducible process settings

Automatically removes oil residue from softgel surfaces in preparation for capsule printing

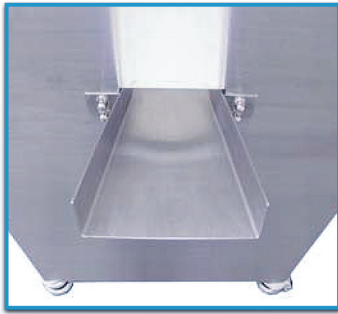


**POLISHING DRUM**  
• Inside View •

Disposable non linting towels are attached to the stainless steel rings



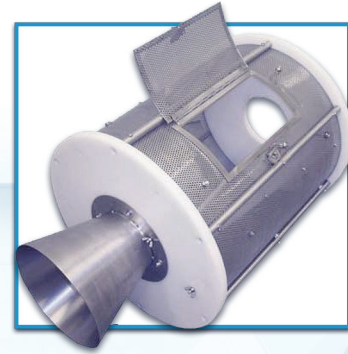
**SG500 with Optional Infeed Table**



Fast Gravity Fed Inlet Chute



PLC Based Control Panel



View of Exposed Tumble System

### SPECIFICATIONS

<b>Width</b>	28"
<b>Height</b>	41"
<b>Depth</b>	23"
<b>Weight</b>	300 lbs

### ELECTRICAL

**Power Requirements** 110V / 1Ph / 60Hz

### LESS STEPS ... LESS HEADCOUNT

	CONVENTIONAL COATING PAN	SG500
Inspect	*	*
Transfer to Polisher		*
Transfer to Tote	*	
Place Tote on Skid	*	
Move Skid to Polishing	*	
Scoop Softgels into Coater	*	
Add Low Lint Alcohol Fabric	*	*
Remove Low Lint Fabric	*	
Scoop Back into Tote	*	
Place Tote on Skid	*	*
Move Skid to Packaging	*	*

### FEATURES

- Continuous or intermittent flow controls
- Compact design: 28"W x 23"D x 41"H
- All stainless steel construction with FDA approved contact parts
- Hinged top & left side
- 304 stainless steel enclosures with safety interlocks
- Inlet & discharge chutes
- Variable speed DC drive system
- Sight window
- Speed: up to 500,000 softgels/hour, depending on size & oil residue
- "Tool Free" design
- 1/2 HP main drive system
- Anti-vibration mounts
- Electrical: 110V / 1Ph / 60Hz
- Mounted on 4 casters with leveling feet
- PLC based timers for auto forward & reverse

### BENEFITS

- Reduced labor: Suitable for both small & large batches
- Easily fits into any operation, occupies little floor space
- Perfect for both pharmaceutical & nutraceutical operations
- Easy access & cleaning
- For safety, machine will stop if opened during operation
- Allows machine to be used in both automatic & batch processes
- Allows speed to be adjusted to output of softgel machine
- Facilitates visual inspection of the process
- Able to "Keep Up" with any softgel production machine
- Can be disassembled without tools
- Powerful enough to handle any size softgel
- Machine is quiet when in operation
- Does not require special electrical connection
- Easy portability
- Variable, reproducible process settings